



Industrial Computer Solutions

**artech**  
art of technology

**ULTIMATE SERIES IPC-615E**

# IPC-615E



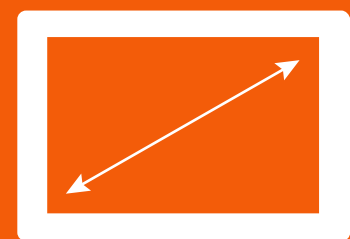
**Artech Ultimate Series** increases your production efficiency in heavy industrial environments, providing sustainable high performance to reduce your cost and energy use are touch panel computers.



**High Contrast  
Industrial Panel**



**IP65  
Front Panel Protection**



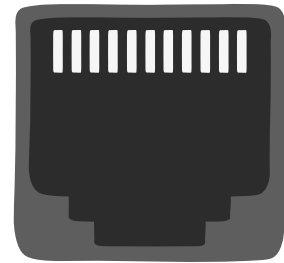
**15"  
Screen Options**



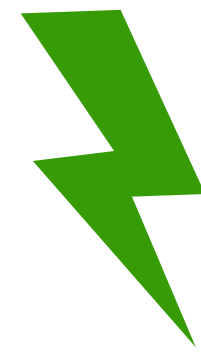
**Windows 7/Windows 10**  
Operating System  
Compatible



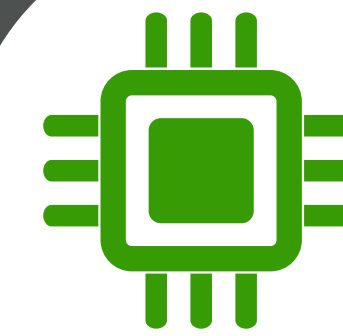
**Easy Removable and  
Replaceable SSD Slot**



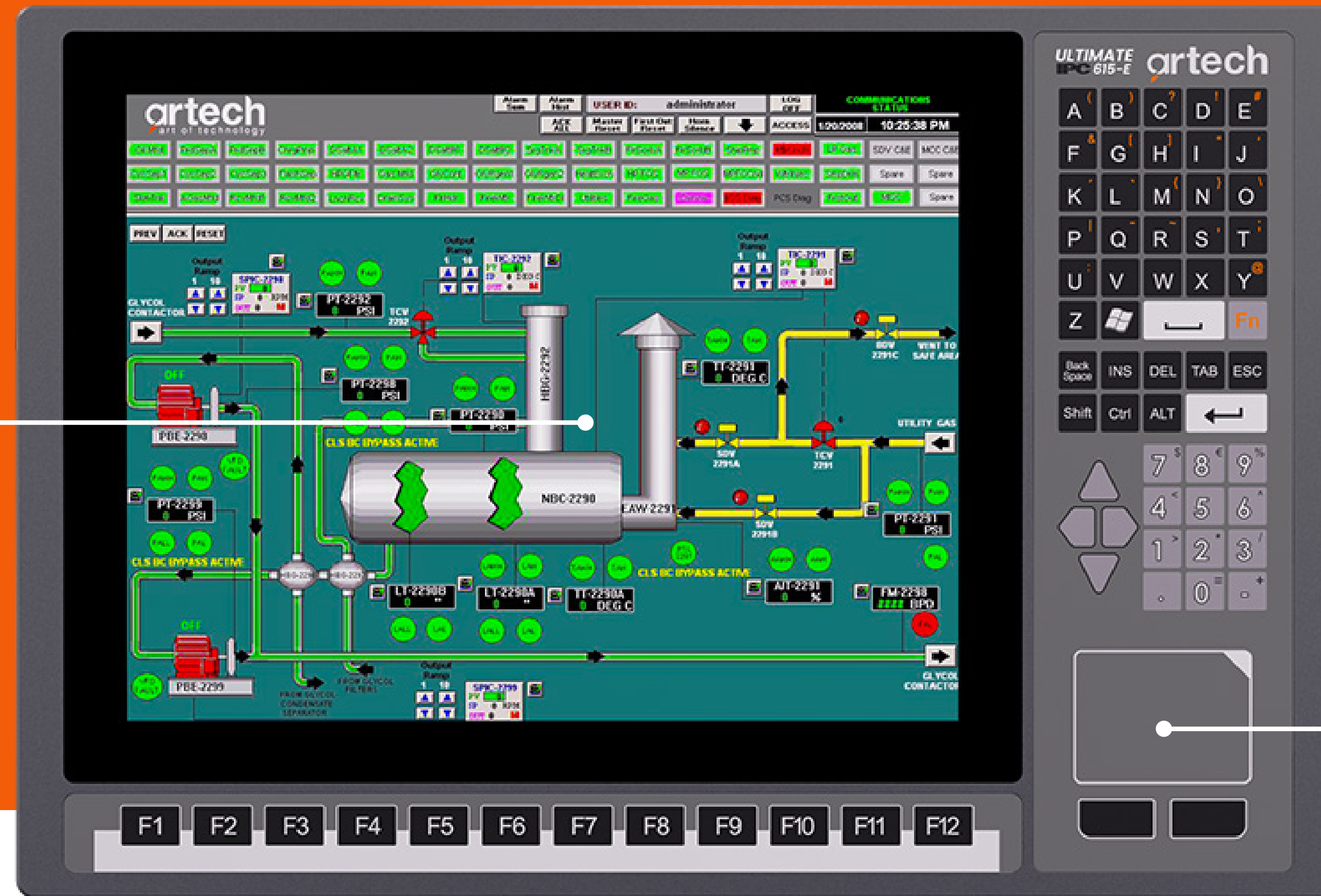
**3 X Ethernet Port,  
2 X PCI Slot**



**24VDC  
Feeding**



**i5 6. Gen.  
Processor**



**3 mm Impacts**  
**Durable** Resistive or  
Capacitive  
Flat Touch Technology



**Internal Industrial**  
Keyboard and  
Touchpad



## PCI Card Replacement for Two Piece Aluminum Cooler

\*Card Replacement Possibility without  
Removing the CPU Side

**Fanless, Fully Closed,**  
Dust Proof, Stainless  
Steel Metal Body

**Vesa**  
Mounting Option

**Panel**  
Mounting Option





Sustainable  
Production



Durable and  
Long Life



7/24 to  
Work Suitable



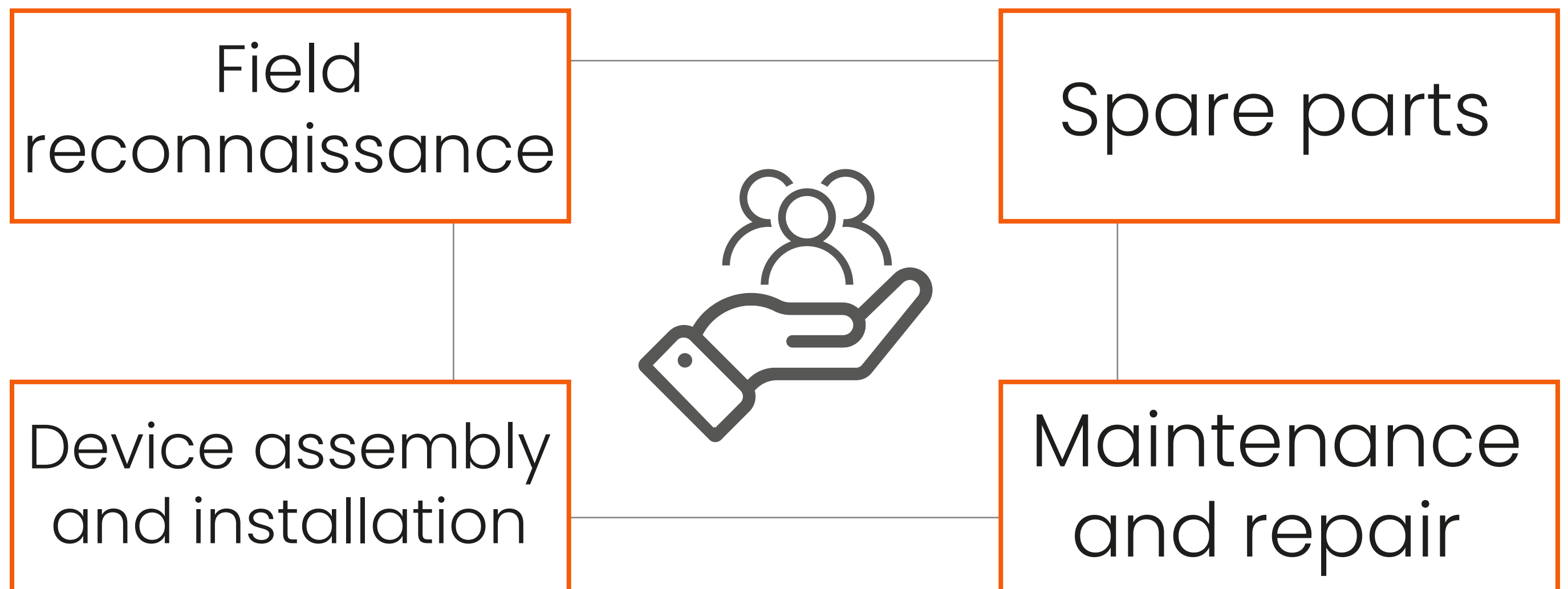
Fast  
Technical  
Service



# AFTER SALES SERVICES

- Up to 3 years warranty
- Up to 5 years spare parts supply warranty

Our After-Sales Services offer the following services to our customers:





ÇİZGİ TEKNOLOJİ



Scan the QR code for our references.

[info@cizgi.net](mailto:info@cizgi.net)

+90 216 365 82 50



[www.cizgi.net](http://www.cizgi.net)  
[www.artech-ipc.com.tr](http://www.artech-ipc.com.tr)



Çizgi Teknoloji Elektronik Tasarım  
ve Üretim A.Ş.



Cizgi Technology  
Artech-Art of Technology